

Effects of dietary moisture content of extruded diets on physical feed quality and nutritional response in Atlantic salmon (*Salmo salar*)

A CREATE project

Maike Oehme, Turid Synnøve Aas, Hanne Jorun Olsen, Mette Sørensen, Marie Hillestad, Yafei Li and Torbjørn Åsgård





Nofima is a business oriented research institute working in research and development for the aquaculture, fisheries and food industry in Norway.

Nofima has about 420 employees. The main office is located in Tromsø, and the research divisions are located in Averøy, Bergen, Sunndalsøra, Stavanger, Tromsø and Ås.

Main office in Tromsø
Muninbakken 9–13
P.O. box 6122
NO-9291 Tromsø
Norway
Tel.: +47 77 62 90 00
Fax: +47 77 62 91 00
E-mail: post@nofima.no

Internet: www.nofima.no

Report

ISBN: 978-82-8296-038-0 (printed)
ISBN: 978-82-8296-039-7 (pdf)

Report no:
41/2012

Accessibility:
Open

<p><i>Title:</i> Effects of dietary moisture content of extruded diets on physical feed quality and nutritional response in Atlantic salmon (<i>Salmo salar</i>) - A CREATE project</p>		<p><i>Date:</i> 20.12.2012</p>
		<p><i>Number of pages and appendixes:</i> 28</p>
<p><i>Author(s):</i> Maike Oehme, Turid Synnøve Aas, Hanne Jorun Olsen, Mette Sørensen, Marie Hillestad, Yafei Li and Torbjørn Åsgård</p>		<p><i>Project no.:</i> 2424 CREATE</p>
<p><i>By agreement with:</i> CREATE, SFI, SINTEF Sealab, NO-7645 Trondheim, Norway</p>		<p><i>Contractors ref.:</i> Arne Fredheim</p>
<p><i>Three keywords:</i> Pellet quality, Dietary moisture content, Feed intake</p>		
<p><i>Summary:</i></p> <p>Feed pellets in modern aquaculture must be of high physical quality to withstand impacts during transport, storage and feeding. However, physical quality of feed has been shown to affect feed intake, nutrient digestibility as well as disintegration of pellets in the stomach of rainbow trout. Drying procedure, which varies in commercial feed production, predicts moisture content of feed, but also affects the physical feed quality. In the present study, different feed qualities were produced by drying to different moisture content. Effects on feed intake, nutrient digestibility and growth performance in Atlantic salmon were investigated.</p> <p>Four commercial-like high energy extruded diets of identical nutrient composition on a dry matter basis were produced. Different drying times were employed to achieve four diets with dry matter contents of 95.9%, 94.1%, 92.3%, 90.8%. A fifth diet containing 70% dry matter was made by soaking pellets from one of the dry diets in sea water for 2 hour. Triplicate groups of Atlantic salmon with an initial weight of 961 ± 12.1 g (mean ± SEM, N=240) were fed ad libitum for 91 days, and 7 days with restricted feeding to obtain equal feed intake in all tanks.</p> <p>The results showed that feed intake in fish fed ad libitum was affected by soaking but not by drying procedure of the diets. The diets differed significantly in dry matter, bulk density, DORIS durability and hardness. None of these measurements correlated with feed intake or growth. Long term water stability of the diets was not affected by drying time and soaking, and had a positive linear effect on feed intake and growth. Digestibility of most nutrients was highest in fish fed restricted compared to ad libitum feeding, but was not affected by drying duration. Starch digestibility was slightly reduced for the soaked diet compared to the corresponding dry diet. Pellet integrity in the gastrointestinal tract was not significantly different among treatments. The positive effect of soaking of feed may be of particular importance when feed intake is low.</p>		

Table of contents

1	Introduction	1
2	Materials and methods	3
2.1	Diets	3
2.1.1	Diets for pre-study	3
2.1.2	Diets for main study	3
2.2	Fish trial	6
2.2.1	Pre-study	6
2.2.2	Main trial	6
2.3	Analysis of physical feed quality	6
2.4	Chemical analyses	7
2.5	Particle size distribution and particles formed in-vitro	7
2.6	Gastrointestinal content and tissue	7
2.7	Calculations	8
2.8	Statistical analysis	8
2.8.1	Physical feed quality	8
2.8.2	Effect of drying	9
2.8.3	Effect of soaking	9
2.8.4	Effect of fixed feeding	9
2.8.5	Fish trial and physical feed quality	9
3	Results	10
3.1	Chemical feed composition	10
3.2	Physical feed quality	10
3.3	Particle size distribution and particles formed in-vitro	12
3.4	Fish experiment	13
3.4.1	Effect of drying time in feed production	13
3.4.2	Effect of soaking	13
3.4.3	Effect of soaking on feed intake in three situations	14
3.5	Relationship between physical feed quality and feed intake	15
3.6	Digestibility	16
3.7	Gastrointestinal content and tissue	17
4	Discussion	18
4.1	Feed intake, growth and feed utilisation	19
4.2	Measurement of physical feed quality	21
4.3	Physical feed quality and water quality	22
5	Conclusion	23
6	Acknowledgments	23
7	References	24

1 Introduction

The grow-out phase of Atlantic salmon takes place in large sea cages. With cage volumes of up to 80,000 m³ and stocking density up to 25 kg m³ (Oppedal et al., 2011) one cage may hold a fish biomass of 2,000 tons. At modern farm sites, several cages are supplied by one feed barge, that daily deliver up to 20 tons feed to every cage. To deal with these large volumes, feed often is transported in bulk. At the farm, feed is often kept in large silos and conveyed with use of pneumatic feeding systems to the cages (Aas et al., 2011a, Oehme et al., 2012). Developments in feed transportation have increased the mechanical impacts on feed pellets. Feed producers thus need to produce feeds with high pellet quality to avoid pellet breakage. Pellet breakage represents loss of valuable feed resources and has consequences for the cost-efficiency of salmon production (Aas et al., 2011a).

Salmon feeds are produced by extrusion process, a combination of high pressure, high temperature and shear forces, as reviewed by Sørensen (2012). Moisture also plays an important role (Sørensen et al., 2002). The final quality of the pellets is affected by production conditions during grinding, conditioning, extruding and drying, as well as physiochemical properties of ingredients. The gelatinization and expansion of starch in combination with denaturing of proteins result in water stable, durable pellets with bulk densities that can be adjusted according to the demand for oil absorption post extrusion and sinking velocity.

Different methods and equipment can be used to describe the characteristics of extruded pellets such as durability tests, hardness test and water stability tests (Sørensen, 2012). Physical feed quality is most often not reported in feeding experiments and there exist no standards for reporting of physical feed quality, although studies have shown an interaction between physical feed quality and nutritional responses in fish (Aas et al., 2011b, Bæverfjord et al., 2006, Glencross et al., 2011a, Morken et al., 2011, Sveier et al., 1999, Venou et al., 2009). It remains unclear how different physical quality methods relate to feed intake and feed utilization in fish. More research is needed to understand how different pellet quality parameters interfere with feed intake, growth and feed utilization in order to utilize the full growth potential of the fish. It is important to optimize the physical feed quality in order to minimize the losses as pellet breakage during transportation and handling at the same time as feed intake is maximized.

Morken et al. (2011) reported higher pellet durability and nutrient digestibility in rainbow trout fed pellets produced at high extrusion temperatures (141 °C) compared to low temperature (110 °C). A correlation was found between extruded and screw-pressed diets for nutrient digestibility in diets based on different ingredients (Glencross et al., 2011a). Use of fish meal gave the slowest degradation of feed in the stomach followed by lupin kernel meal and soybean meal. These latter authors suggested that lupin meal gave a harder and more durable pellet than soybean meal during the extrusion process. However, they did not find any correlation between digestibility and the pellet integrity in the stomach. Venou et al. (2009) reported a slight reduction in feed intake, but an increase in growth, feed utilization, and digestibility of starch and energy in sea bream fed an extruded diet compared to steam pelleted feed. The decreased feed intake of the extruded diet was attributed to a nearly

doubled gastric retention time measured in fish fed this diet. A feed with low water stability gave 20 % higher feed intake compared to a feed with high water stability in rainbow trout (Aas et al., 2011b). The more water stable feed also gave higher nutrient digestibility compared to the less water stable feed (Aas et al., 2011b). Still it remains unclear whether the increased nutrient digestibility observed in the water stable diet was caused by physical feed quality or by lower feed intake. A high feed intake is related to a faster gastrointestinal evacuation rate and is negatively associated with nutrient digestibility (Adamidou et al., 2009, Venou et al., 2009). Gastrointestinal evacuation rate in Atlantic salmon is also affected by coarseness of the ingredients. Sveier et al. (1999) showed increased retention time in the gastrointestinal tract when feeds are produced with coarse ground fish meal compared to fine ground fish meal.

High feed intake and feed utilization is an assumption to fully realize the growth potential of the salmon, and for an efficient utilization of the feed (Bergheim & Åsgård, 1996, Einen et al., 1995, Einen et al., 1999, Gjedrem et al., 2012). In recirculating systems, total suspended solids and particle size distribution are important variables for water quality (Summerfelt & Vinci, 2007). Removing particles smaller than 40 µm by sedimentation or filtration is not efficient with the existing technology (Chen et al., 1993, Cripps & Bergheim, 2000). The pellet quality may thus have a significant impact on water quality.

A study carried out with rats suggested that hardness of feed plays an important role in selection and ingestion of food (Ishizuka et al., 2010). Texture of the feed interfered with feed intake in pigs (Sola-Oriol et al., 2009) and chickens (Picard et al., 2000). Interestingly, dietary moisture content has an impact on feed intake and nutrient utilization of poultry (Scott, 2002) and weaning piglets (Schellingerhout, 2002) and is also important for physical quality of pellets (Gilpin et al., 2002, Lundblad et al., 2011, Moritz et al., 2001). It can therefore be hypothesized that feed moisture content can be used as a mean to adjust pellet quality of feed for Atlantic salmon. Different pellet qualities can be obtained by changing post extrusion drying time or by soaking feed pellets. Producing pellets with different physical qualities using means such as changing feed formulations or extrusion parameters may result in confounded effects and difficulties interpreting the results.

The aim of this study was to investigate the effect of moisture content of extruded feed on physical pellet quality, feed intake, growth and nutrient digestibility in Atlantic salmon. Nutrient digestibility was analyzed at both ad libitum feeding and constant feeding ration to separate between effects of dietary treatment and feed intake. Also, the amount of total suspended solids and particle size distribution of released fines from pellets was analyzed.

2 Materials and methods

The study was carried out in two experiments; a pre-study and a main study. The pre-study tested the effect of soaked and unsoaked feed on feed intake. In the main study, five diets differing in moisture contents were tested for the effect on feed intake, growth rate and nutrient digestibility (Table 1).

Table 1 Overview of the trials.

	Pre-study	Main trial			
		Adaptation	Period 1	Period 2, refeeding	Period 2, restricted
Diets	D91, S73	Commercial and Nofima diet	D96, D94, <u>D92</u> , D91, <u>S70</u>	D96, D94, <u>D92</u> , D91, <u>S70</u>	D96, D94, <u>D92</u> , D91, <u>S70</u>
Feeding	<i>ad libitum</i>	<i>ad libitum</i>	<i>ad libitum</i>	<i>ad libitum</i>	restricted
Duration	41 days	35 days	91 days	12 days	7 days

2.1 Diets

All feeds (feeds for pre-study and main study) were produced by Biomar AS (Tech Centre, Brande, Denmark).

2.1.1 Diets for pre-study

One experimental feed with identical formulation and similar extrusion conditions as diets in the main study, was produced with dry matter content (DM) of 91.2%. This was fed either as is or the pellets were moistened by immersing the daily feed ration for each tank in 500 ml sea water (4 °C) for 120 min prior to feeding. The pellets were kept in a 4 °C cooler during the soaking. The soaking resulted in pellets with a DM of 73.2%, a soft surface and a core that remained hard. The diets were labeled according to their DM content (D91 and S73). The chemical compositions are given in Table 2.

2.1.2 Diets for main study

Four experimental diets were produced with identical ingredient composition and extrusion conditions. The different feed qualities of dietary treatment 1-4 were achieved by adjusting the drying conditions post extrusion in order to provide diets of 95.9 %, 94.1%, 92.3 %, 90.8 % DM. The diets were labeled according to their DM content D96, D94, D92, D91, respectively. The fifth dietary treatment, a soaked feed (diet S70) was produced by soaking feed D92 in sea water to a DM of 69.5 %. Soaking was performed as described for the pre-study. Chemical composition of the feeds are shown in Table 2. The feeds were formulated on a 95 % dry matter basis (20% fishmeal, 15.5 % soy protein concentrate, 3 % wheat gluten, 15.5 % sunflower expeller, 15.2 % dehulled bean, 21.1 % fish oil, 9 % rape oil, 1.26 % monocalciumphosphate 0.36 % amino acids, 0.23 % mineral and vitamin mix, 0.05 % yttriumoxid). A feed batch including all ingredients was mixed and preconditioned in an atmospheric conditioner (Clextal, Firminy, France) prior to extrusion (BC 45, Clextal, Firminy, France). After extrusion the diets were dried in a six layer column dryer (Geelen type), aiming at different DMs by varying the drying time. The times of drying were 350

seconds (s), 230 s, 115 s and 50 s, respectively for the four diets. The temperature of inlet air to the top layer was kept constant at 117-118 °C, and at 80-81°C to the fifth layer. After drying and cooling, the feeds were packed in 25 kg plastic bags and were stored at 4 °C.

Table 2 Chemical composition of experimental diets used in the main trial and in the pre-study. Differences were produced by different drying times (D96, D94, D92, D91) or by soaking in sea water for 2 hours (S70, S73).

	Main trial					Pre-study	
	D96	D94	D92	D91	S70	D91	S73
Dry matter (g kg ⁻¹)	959	941	923	908	695	912	732
<i>In dry matter</i>							
Crude protein ¹ (g kg ⁻¹)	375	367	371	369	372	363	363
Sum of amino acids (g kg ⁻¹)	301	296	306	302	294		
Crude lipid (g kg ⁻¹)	347	350	351	349	355	339	356
Starch (g kg ⁻¹)	57.7	54.9	57.0	57.0	55.8	62.1	61.7
Energy (MJ kg ⁻¹)	26.3	26.1	26.0	26.3	26.2	25.8	26.0
<i>Minerals</i>							
Phosphorous (g kg ⁻¹)	10.7	10.7	10.7	10.7	10.4	NA	NA
Magnesium (g kg ⁻¹)	2.1	2.1	2.1	2.1	2.5	NA	NA
Sodium (g kg ⁻¹)	3.1	3.0	3.2	3.1	5.8	NA	NA
Iron (mg kg ⁻¹)	210	212	212	205	259	NA	NA
Zinc (mg kg ⁻¹)	178	169	169	168	165	NA	NA
Yttriumoxid (g kg ⁻¹)	0.47	0.46	0.45	0.47	0.45	NA	NA
<i>Dispensibile amino acids (g kg⁻¹)²</i>							
Alanine	13.5	13.2	13.7	13.4	12.8	NA	NA
Aspartic acid ³	29.8	29.5	30.3	29.9	29.5	NA	NA
Cysteine	3.8	3.7	3.9	3.9	3.8	NA	NA
Glutamic acid ⁴	58.6	58.2	60.3	59.7	58.3	NA	NA
Glycine	13.4	13.1	13.5	13.5	12.8	NA	NA
Proline	15.5	15.4	15.7	15.1	14.9	NA	NA
Serine	13.5	13.2	13.8	13.6	13.2	NA	NA
Taurin	1.3	1.3	1.3	1.4	1.1	NA	NA
Tyrosine	11.2	10.9	11.3	11.1	11.8	NA	NA
<i>Indispensible amino acids (g kg⁻¹)²</i>							
Arginine	22.2	21.7	22.4	22.3	21.7	NA	NA
Histidine	8.4	8.1	8.5	8.2	7.9	NA	NA
Isoleucine	13.7	13.5	14.0	13.9	13.5	NA	NA
Leucine	22.7	22.4	23.1	22.8	22.2	NA	NA
Lysine	22.2	22.0	22.6	22.5	21.5	NA	NA
Methionine	8.4	8.3	8.5	8.3	7.7	NA	NA
Phenylalanine	12.9	12.5	13.0	12.7	12.3	NA	NA
Threonine	11.8	11.5	11.9	11.7	11.4	NA	NA
Tryptophan	4.0	3.8	4.2	4.1	4.2	NA	NA
Valine	15.1	14.8	15.3	15.2	14.8	NA	NA

¹ N x 6.25

² Amino acids are given as dehydrated residuals.

³ Asparagine is converted to aspartic acid during analysis, thus aspartic acid represents the sum of asparagine and aspartic acid.

⁴ Glutamine is converted to glutamic acid during analysis, thus glutamic acid represents the sum of glutamine and glutamic acid.

NA, not analyzed

2.2 Fish trial

The two studies were carried out at Nofima's research station at Sunndalsøra, Norway from August 2011 until March 2012.

2.2.1 Pre-study

Daily feed intake of the two diets was measured for 41 days in triplicate tanks. In total, 120 Atlantic salmon, with an average initial weight of 809 ± 90.2 g (mean \pm SD, N=120) were distributed to 6 tanks (1 m²). The two feeds were randomly assigned to the tanks. Automatic belt feeders were used to feed the fish once per day, in a meal lasting for two hours.

2.2.2 Main trial

A total of 240 Atlantic salmon were distributed to 15 tanks (1 m²). All fish were PIT tagged and distributed to the tanks based on randomization of the PIT tag identity. The first 35 days was an adaptation period, and the fish were fed a mixture of a commercial 7 mm diet (Skretting) and a marine ingredient-based 9 mm diet produced at Nofima.

At start of the feeding trial the body weight was 961 ± 187 g (mean \pm SD, N=240). The five experimental feeds were randomly assigned to three replicate tanks. The fish were fed one meal a day lasting for approximately 30 min using automatic belt feeders. Waste feed collection and calculation of feed intake was done according to Helland et al. (1996). The fish were kept in sea water (salinity 32 ppt) with average temperature 9.4 °C (range 7.8 °C - 11.2 °C), and at continuous light. During the first period (91 days) fish were fed ad libitum. The feed amount was adjusted every day based on the estimated feed intake for the last three days aiming at 20 % overfeeding. During period two (19 days), fish were first fed ad libitum (12 days) until stable feed intake was obtained. For the last 7 days of period two, the fish in all tanks was fed a fixed DM ration of 0.4% of biomass. Fish were weighed individually at the start and end of each period. After period one and two, faeces was stripped from all fish and pooled by tank for analyses of digestibility (Austreng, 1978). The last meal was fed 22 to 27 hours prior to sampling. Sampling was carried out in three blocks, with one replicate feed in each block to avoid effects due to sampling at different times after feeding.

2.3 Analysis of physical feed quality

Hardness was analyzed by diametrical compression using a texture analyzer (TA-XT2, Model 1000 R, SMS Stable Micro Systems, Blackdown Rural Industries, Surrey, UK) as described in Aas et al. (2011b). For each diet, 35 pellets were analyzed, and strength at rapture (N) was recorded. The texture analyzer also recorded the diameter on the pellets used for the hardness measurements. Bulk density was analyzed in three replicates by pouring pellets in a 1000 ml cylinder with subsequent weighing (described in Aas et al., 2011b and Sørensen, 2012). Pellet durability was analyzed by the DORIS tester (AKVAsmart, Bryne, Norway) in three replicates. Pellets (350 g) were loaded in the DORIS tester and sieved afterwards for 30 s at amplitude of 1.5 using a Retsch AS 200 Control sieving machine (Retsch GmbH, Haan, Germany). The screens used for collection had a mesh width of 8.0 mm, 5.6 mm and 2.4 mm and the fractions were recorded as intact pellets, large fracture, small fracture and dust, respectively (described in Aas et al., 2011b and Sørensen, 2012). Bulk density and DORIS durability could not be analyzed on the soaked feed. Water stability was measured in three replicate samples for 60 min, 120 min and 240

min by filling 20 g of pellets in a custom made steel-mesh placed inside a glass beakers containing 300 ml distilled water. The beakers were shaken at 100 shakings per minute in a water bath at 25 °C. After incubation the retained DM was measured (described in Sørensen, 2012).

2.4 Chemical analyses

Faeces was freeze dried prior to analysis. Feed and faeces was analysed for dry matter by drying at 105 °C to constant weight, ash was analyzed by combustion at 550°C to constant weight, crude protein by nitrogen x 6.25 (Kjeltec Auto Analyser), crude lipid by SOXTEC hydrolyzing and extraction systems, while gross energy was measured by bomb calorimetry (Parr 1271 Bomb calorimeter). Starch was determined as glucose after enzymatic hydrolysis, by a commercial kit based on the GODPOD method (Megazyme, Bray, Ireland). Amino acids were analysed by using a Biochrom 30 amino acid analyser (Biochrom, Cambridge, UK). Tryptophan was analysed after basic hydrolysis (Hugli & Moore, 1972), and the remaining amino acids according to Davies (2002). During sample preparation, glutamine and asparagine are converted to glutamic acid and aspartic acid, respectively. Therefore, in the following, the given value for glutamic acid and aspartic acid represents the sum of glutamic acid and glutamine, and aspartic acid and asparagine, respectively. Yttrium oxide (inert digestibility marker) and minerals were analysed by inductively coupled plasma mass spectroscopy (ICP-MS, at Eurofins, Moss, Norway).

2.5 Particle size distribution and particles formed in-vitro

A water stability test was carried out on the 5 feeds in three replicates with the same equipment as described above. Feed pellets (20 g, as is) were shaken in 300 ml distilled water at 18 °C in 500 ml glass beakers. Pellets were shaken for 15 min at 50 shakings per minute to mimic a normal situation, and for 120 min at 90 rpm to mimic a situation where pellets are trapped in the system or exposed to stronger mechanical impacts over longer period of time. Remaining pellets in the mesh were discarded and the water containing released feed particles was analyzed for total suspended solids and particle size distribution, immediately after the water stability test. Analysis of total suspended solids was carried out according to APHA (2005). Briefly, homogeneous samples with volumes ranging between 49 ml and 100 ml were filtered using dried and preweighted glass fibre filters (GF/C, diameter 55 mm, particle retention 1.2 µm, Whatman). The DM of the filters was determined and amount of total suspended solids (g DM per kg DM feed) calculated. Particle size distribution was analyzed with SALD Series Laser Diffraction Particle Size Analyser (Shimadzu, Kyoto, Japan) and results were analyzed using the software WingSald II, V 2.1. (Shimadzu, Kyoto, Japan).

2.6 Gastrointestinal content and tissue

After period two in the main trial, stomach, pyloric-, mid- and distal intestine and its content were evaluated visually and scores were given using a 0-3 point scale according to the degree of disintegration of feed pellets and abnormal appearance of gastrointestinal tissue, score 0 being normal and scores 1-3 being more or less abnormal conditions.

2.7 Calculations

Feed intake (DM) = Feed fed_a (g, DM) – Waste feed (g, DM) / Recovery

a) Soaked feed was weighed before soaking

Recovery = Feed spill (g, DM) / Feed used_b (g, DM)

b) Feed used for soaking was weighed before soaking and DM of that feed was corrected for DM loss (1.1 % DM) during soaking.

Feed conversion ratio (FCR) = Feed intake (g, DM) / Weight gain (g)

Only non-mature fish were included in the calculation.

Specific growth rate (SGR) = ((ln (Final weight(g)) – ln (Initial weight (g)) / Days fed) x100

Only non-mature fish were included in the calculation.

Specific feeding rate (SFR) = SGR x FCR

Thermal growth coefficient (TGC) = 1000 x ((Final weight^{1/3} (g) – Initial weight^{1/3} (g)) / Sum daydegrees)

Only non-mature were fish included in the calculation.

Apparent digestibility (AD, %) = 100 (a-b) / a

where a is nutrient to marker ratio in feed and b is nutrient to marker ratio in feces.

Total suspended solids (g DM per kg DM feed) = ((DM of filter after filtration (g) – DM of empty filter (g)) / sample volume (ml) x 1000) / (weighted in feed (g) x DM feed (%)) x 1000

Released feed particles (DM, g per kg DM feed) = Total suspended solids (g DM per kg DM feed) x 0.3.

2.8 Statistical analysis

All statistical analyses were carried out with the computer software SAS 9.2. (SAS Institute Inc. Cary, NC, USA). Tank mean was the statistical unit in data of the fish trial (n=3) and data are presented as mean ± SEM for each dietary treatment. The experiment was carried out using triplicate tanks in a complete randomized design. Analyses of physical quality of feed was carried out with the individual measurement as the statistical unit (DORIS, bulk density and water stability n=3; hardness and diameter n=35) and results are presented as means ± SEM for each feed.

2.8.1 Physical feed quality

Pearson correlation analysis among the physical feed quality data on the means of the feeds and was carried out using the corr procedure in SAS (DORIS, bulk density, DM, hardness, diameter and water stability n=1).

2.8.2 Effect of drying

The effect of drying time on chemical feed composition, physical feed quality, feed intake, growth, digestibility and released particles of in-vitro water quality was carried out using regression analysis. Only diets from the main trial were evaluated (D96, D94, D92, D91) using DM as the independent variable.

2.8.3 Effect of soaking

The effect of soaking on chemical feed composition was assessed numerically by calculating the difference between S70 and D92 from the main trial. The results are presented if the difference was greater than 5%. The difference was calculated as: (nutrient S70 / nutrient D92) *100. Differences in physical feed quality, feed intake and growth, digestibility and released particles of in-vitro water quality between the soaked diet and the corresponding dry diet in the main trial were assessed by ANOVA procedure in SAS. A two-way ANOVA was used to analyze the effect of soaking on feed intake with feed and scenario as factors. The three scenarios that were used were the first period of the main trial, the first 12 days of period 2 (adaption period before restricted feeding was introduced) and the pre-study.

2.8.4 Effect of fixed feeding

Nutrient digestibility from the two faecal collection periods were analyzed by one way ANOVA, using repeated ANOVA statement.

2.8.5 Fish trial and physical feed quality

Regression analysis was carried out to analyze linear effects of physical feed qualities on growth and feed intake parameters using all five dietary treatments for DM, hardness, diameter, water stability measurements and using dietary treatment 1-4 for DORIS, bulk density measurements.

3 Results

3.1 Chemical feed composition

The DM content in the feeds showed a significant linear decrease with increasing drying time ($p=0.001$, $R^2=1.00$). The content of most nutrients was similar among diets based on the DM content (Table 2). Only taurine tended to have a linear reduction with increasing drying time ($p=0.087$, $R^2=0.83$). For the soaked diet (S70), higher content of Mg, Na, Fe and Tyr was measured compared to the corresponding unsoaked diet (D92). Nutrients that were present in lower levels in the soaked feed, compared to the corresponding dry diet were Ala, Gly, Hyl, Pro, Tau, His, Met, Phe (all more than 5 % reduced).

Table 3 Measurements of physical feed quality of the experimental diets used in the main trial. Differences were produced by different drying times (D96, D94, D92, D91) or by soaking in sea water for two hours (S70). Data is given as mean \pm SEM.

	D96	D94	<u>D92</u>	D91	S70	p-value	R ²	b
Diameter, mm	10.4 \pm 0.1	10.8 \pm 0.1	10.7 \pm 0.1	10.8 \pm 0.2	10.6 \pm 0.1	0.07	0.02	-0.06
Bulk density, g/l	618.1 \pm 0.5	655.3 \pm 0.5	673.3 \pm 0.3	678.4 \pm 0.1	NA	<.0001	0.91	-11.78
Hardness, N	37.7 \pm 4.8	33.2 \pm 3.6	52.3 \pm 2.7	50.4 \pm 2.8	54.3 \pm 1.8	<.0001	0.15	-4.03
DORIS intact ¹ , %	37.9 \pm 0.9	73.6 \pm 0.3	93.9 \pm 0.4	98.8 \pm 0.1	NA	<.0001	0.92	-12.00
DORIS large fracture ¹ , %	30.4 \pm 0.4	12.9 \pm 0.5	2.6 \pm 0.2	0.4 \pm 0.1	NA	<.0001	0.92	5.94
DORIS small fracture ¹ , %	19.0 \pm 0.9	7.1 \pm 0.3	1.9 \pm 0.1	0.5 \pm 0.0	NA	<.0001	0.89	3.60
DORIS dust ¹ , %	11.9 \pm 0.1	6.2 \pm 0.3	1.6 \pm 0.1	0.4 \pm 0.0	NA	<.0001	0.95	2.31
Water stability 60 min ² , %	95.4 \pm 0.3	95.8 \pm 0.1	96.0 \pm 0.2	96.3 \pm 0.0	95.8 \pm 0.1	0.002	0.62	-0.17
Water stability 120 min ² , %	93.6 \pm 0.2	94.0 \pm 0.2	94.2 \pm 0.4	95.1 \pm 0.1	94.7 \pm 0.4	0.001	0.66	-0.27
Water stability 240min ² , %	92.5 \pm 0.2	92.3 \pm 0.2	92.1 \pm 0.5	93.1 \pm 0.2	93.0 \pm 0.3	0.362	0.08	-0.09

¹ The given DORIS values are the percentage of each size fracture present in the sample after the DORIS tester. The different size fractions of DORIS values were: DORIS intact > 8.0 mm; DORIS large fracture > 5.6 mm and < 8.0 mm; DORIS small fracture > 2.4 mm and < 5.6 mm; DORIS dust < 2.4 mm.

² Water stability is given as remaining DM of DM at start of test (%) at 60, 120 and 240 min.

NA, not analyzed

Effect of drying time was analyzed by regression on dry diets D96, D94, D92 and D91.

3.2 Physical feed quality

The DM of the diets had a significant negative linear effect on DORIS intact, and bulk density ($R^2=0.92$ and $R^2=0.91$, respectively) (Table 3). Dietary DM had a significant negative linear effect on hardness, water stability at 60 min and at 120 min, but less of the variation was explained ($R^2=0.15$, $R^2=0.62$, $R^2=0.66$, respectively). For DORIS fractures and DORIS dust, dietary DM had a significantly positive linear effect and R^2 was 0.89 and 0.95, respectively. The DM content of the diets had no significant linear effect on diameter and water stability at 240 min. Soaking of the feed did not affect pellet hardness or water stability at any of the three incubation times of the feeds. Correlation of the physical quality measurements indicated that DM, DORIS durability and bulk density were strongly correlated (Table 4). Water stability after 60 min was correlated to DORIS durability and bulk density. Water stability after 120 and 240 min and hardness did not show any significant correlations to any other tests of physical feed quality. The two driest feeds had highest frequency of broken pellets at low force (≤ 10 N) (Fig. 1).

Table 4 Results of Pearson's correlation analysis of measurements of physical feed quality of the experimental diets used in the main trial. Differences were produced by varying drying times (D96, D94, D92, D91) or by soaking in sea water for two hours (S70).

	DORIS intact	DORIS large fracture	DORIS small fracture	DORIS dust	Bulk density	Hardness	Diameter	Water stability 60min	Water stability 120min	Water stability 240min
DM	-0.959	0.958	0.944	0.977	-0.952	-0.627	0.124	-0.075	-0.511	-0.572
	0.041	0.042	0.056	0.023	0.048	0.258	0.842	0.905	0.379	0.314
DORIS intact		-1.000	-0.998	-0.996	0.999	0.719	0.845	0.964	0.833	0.195
		<.0001	0.002	0.004	0.001	0.281	0.155	0.036	0.167	0.805
DORIS large fracture			0.998	0.996	-0.999	-0.724	-0.841	-0.962	-0.830	-0.191
			0.002	0.004	0.001	0.277	0.159	0.038	0.170	0.809
DORIS small fracture				0.988	-1.000	-0.676	-0.873	-0.956	-0.817	-0.172
				0.012	0.000	0.324	0.127	0.044	0.183	0.828
DORIS dust					-0.992	-0.775	-0.799	-0.972	-0.858	-0.242
					0.008	0.225	0.201	0.028	0.142	0.758
Bulk density						0.694	0.863	0.961	0.827	0.188
						0.306	0.137	0.039	0.173	0.812
Hardness							0.365	0.739	0.806	0.371
							0.546	0.154	0.099	0.539
Diameter								0.817	0.541	0.021
								0.091	0.346	0.973
Water stability 60min									0.845	0.332
									0.072	0.586
Water stability 120min										0.750
										0.145

DM, DORIS intact, DORIS large fracture, DORIS small fracture, DORIS dust, bulk density, hardness, diameter, water stability at 60 min, water stability at 120 min and water stability at 240 min were tested pairwise. DORIS durability and bulk density were not measured for diet S70. DORIS intact > 8.0 mm; DORIS large fracture > 5.6 mm and < 8.0 mm; DORIS small fracture > 2.4 mm and < 5.6 mm; DORIS dust < 2.4 mm

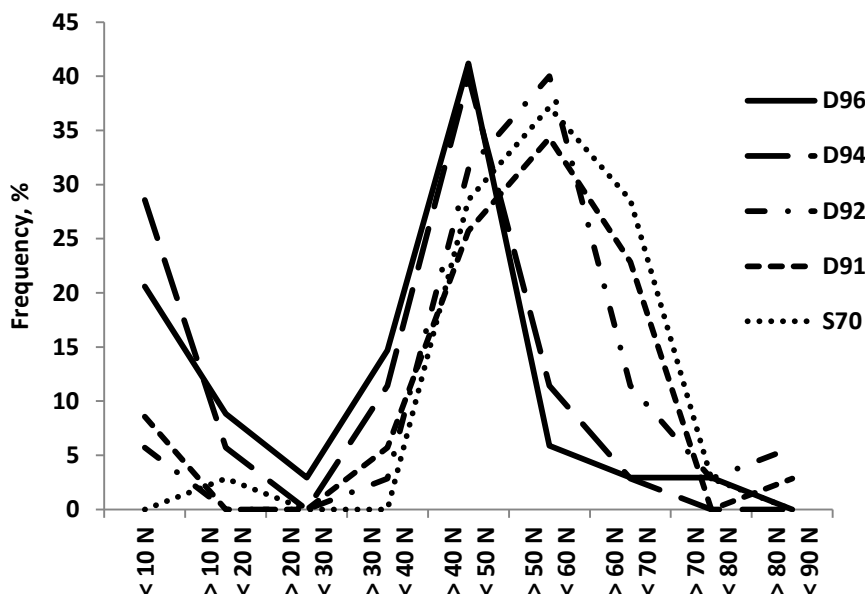


Figure 1 Frequency distribution (%) of hardness measurement of feed pellets with different physical quality of diets used in the main trial. Differences were produced by different drying times (D96, D94, D92, D91) or by soaking in sea water for two hours (S70). The class interval width was 10 N, and the endpoints were 0 and 100 N.

3.3 Particle size distribution and particles formed in-vitro

After 15 min of gentle shaking in water bath, dietary DM content had a significant positive linear effect on the amount of particles that were released from the feed pellets and measured in the water. Most particles were measured for diet D96 (7.1 ± 0.5 g per kg dry feed), followed by 5.6 ± 0.3 , 3.9 ± 0.7 , 2.1 ± 0.3 g DM per kg DM feed for diet D94, D92 and D91, respectively. The soaked diet released higher amount of particles than the corresponding dry diet (6.6 ± 0.8 g per kg dry feed, $p=0.07$). The mean particle size distribution ranged between $167.1 \pm 31.2 \mu\text{m}$ and $121.9 \pm 1.7 \mu\text{m}$, for D96 and S70, respectively and no differences were observed between the diets after 15 min gently shaking (Fig. 2). The amount of particles formed during the course of 120 min intense shaking was higher than at 15 min gentle shaking, but was not significantly affected by the diet, and amounts ranged between 66.8 ± 2.4 and 113.4 ± 15.7 g DM per kg DM feed, for the diets D91 and S70, respectively. After 120 min intense shaking, the particle size was smaller compared to short and gentle shaking and mean particle size was largest for the soaked diet (mean particle size: $0.5 \pm 0.3 \mu\text{m}$), followed by diet D96 (mean particle size: $0.2 \pm 0.1 \mu\text{m}$). Mean particles size for diets D94, D92 and D91 was $0.1 \pm 0.0 \mu\text{m}$.

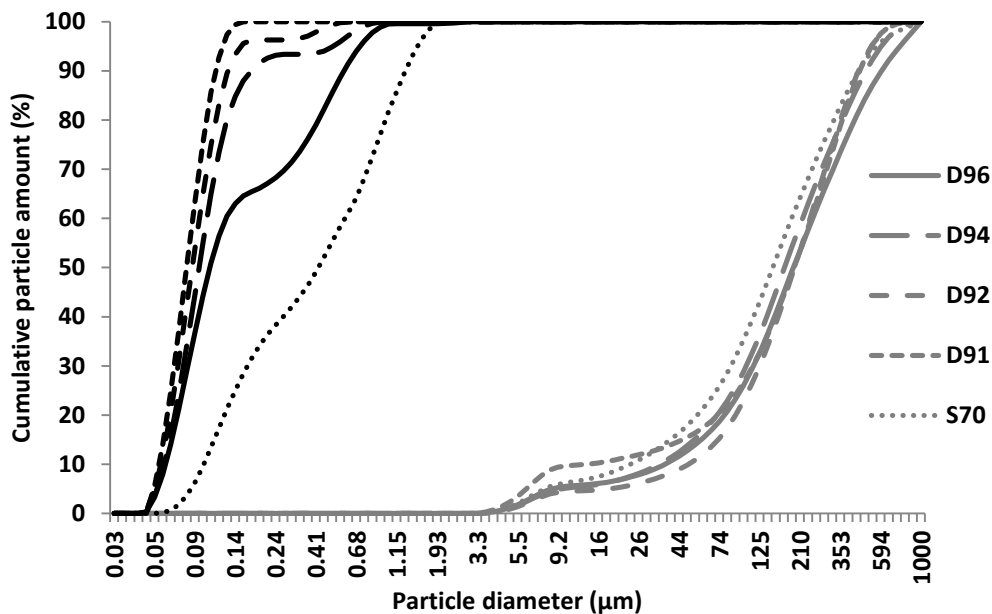


Figure 2 Particle size distribution of released particles from feed pellets used in the main trial at 120 min and 90 shakings per minute (black lines) and at 15 min and 50 rpm shakings per minute (grey lines) in water bath at 18 °C. Feed pellets differed in physical feed quality produced by varying drying time (D96, D94, D92, D91) and by soaking in sea water (S70).

3.4 Fish experiment

One fish died during the main trial after jumping out of the tank. This fish had reduced its body weight since the start of the experiment (-32 g). Most likely it did not consume any feed during the course of the experiment and was therefore excluded from all calculations. Sexual maturation was noted on 2 to 6 male fish per tank. Weight gain recorded on individual fish, showed that mature fish did not grow (Fig. 3). Therefore, feeding and growth results presented are corrected for the mature fish. The non-mature fish grew as expected according to Austreng et al (1987).

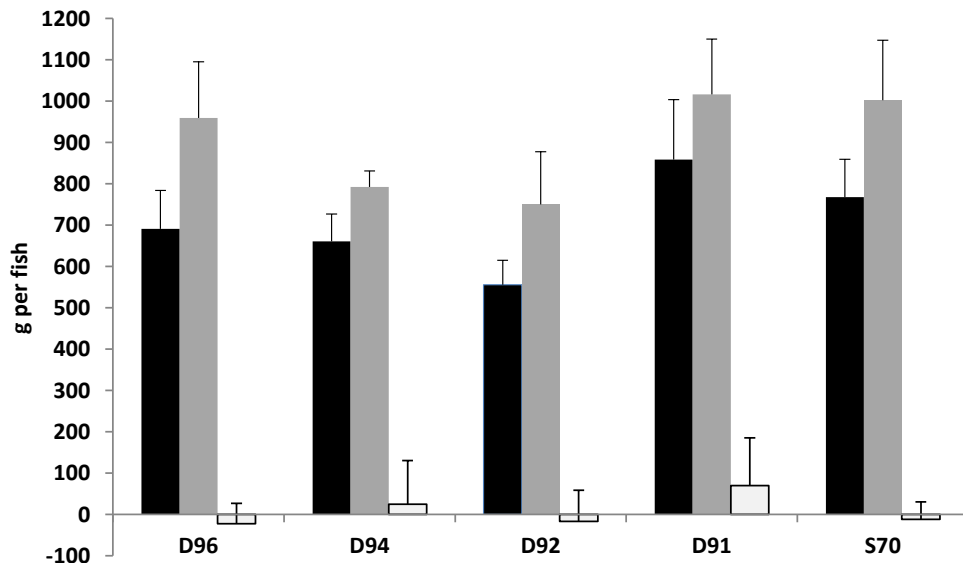


Figure 3 Individual weight gain of Atlantic salmon (g per fish) of all fish (black bars), non-mature fish (grey bars) and mature fish (white bars) fed diets of different physical feed quality ad libitum (period 1 of the main trial). Differences were produced by varying drying times (D96, D94, D92, D91) and by soaking in sea water (S70). Data is given as mean \pm SEM. No significant differences were found.

3.4.1 Effect of drying time in feed production

Regression analysis showed that weight gain (Fig. 3), final body weight, feed intake, SGR, SFR, TGC and FCR (Table 5) were not significantly affected by drying time of the diets ($p > 0.05$). Numerically, feed intake, weight gain, SFR and SGR were slightly higher for fish fed diet D91, second highest for D96, followed by D94 and D92. Fish fed diet D92 had lowest weight gain, feed intake, SFR, SGR and TGC. FCR was slightly higher for D92 compared to the other diets.

3.4.2 Effect of soaking

Soaking did not significantly affect weight gain (Fig. 3), final body weight, feed intake, SGR, SFR, TGC and FCR (Table 5) in the main trial. Numerically however, all parameters were slightly improved for the soaked diet, compared to the corresponding unsoaked diet (D92).

3.4.3 Effect of soaking on feed intake in three situations

Figure 4 shows feed intake (DM) for the soaked diet compared with the corresponding dry diet in three different situations, normal, intermediate and low feed intake. The specific situations were 1) the first period of the main trial 2) the first 12 days of period 2 (adaption period before restricted feeding was introduced), when feed intake was low because of handling stress during sampling and 3) the pre-study which was characterized by very low feed intake. The main effect of soaking was significant ($p=0.005$) indicating that feed intake was significantly higher for fish fed the soaked diet compared to the corresponding dry diet for these three situations. Feed intake tended to be higher for the soaked diet compared to the dry diet for the pre-study ($p=0.051$) and during the adaption period of the second feeding period ($p=0.056$).

Table 5 Weight, feed intake, growth and feed conversion in Atlantic salmon fed diets of different physical feed quality ad libitum (period 1 of the main trial). Differences were produced by different drying times (D96, D94, D92, D91) or by soaking in sea water for two hours (S70). Data is given as mean \pm SEM.

	D96	D94	<u>D92</u>	D91	<u>S70</u>	p-value (drying time)	p-value (soaking)
Initial body weight, g (all fish)	979 \pm 40	939 \pm 2	934 \pm 12	964 \pm 39	988 \pm 30	0.667	0.163
Final body weight, g (all fish)	1670 \pm 111	1600 \pm 65	1490 \pm 47	1823 \pm 182	1756 \pm 121	0.599	0.110
Final body weight, g (non-mature)	1964 \pm 183	1728 \pm 41	1687 \pm 143	1964 \pm 166	2018 \pm 181	0.898	0.225
Feed intake per fish, g DM (all fish)	572 \pm 69	546 \pm 60	478 \pm 44	695 \pm 122	639 \pm 71	0.470	0.124
Feed intake per fish, g DM (non-mature)	796 \pm 122	653 \pm 43	650 \pm 95	828 \pm 127	832 \pm 103	0.807	0.395
SGR, % (non-mature)	0.73 \pm 0.06	0.67 \pm 0.02	0.64 \pm 0.07	0.79 \pm 0.06	0.75 \pm 0.06	0.634	0.299
SFR (non-mature)	0.60 \pm 0.05	0.55 \pm 0.03	0.56 \pm 0.05	0.65 \pm 0.06	0.62 \pm 0.04	0.678	0.357
TGC (non-mature)	2.86 \pm 0.29	2.55 \pm 0.10	2.42 \pm 0.31	3.09 \pm 0.28	2.95 \pm 0.29	0.738	0.278
FCR ¹	0.83 \pm 0.02	0.82 \pm 0.03	0.88 \pm 0.06	0.81 \pm 0.02	0.83 \pm 0.02	0.976	0.577

¹ Calculated as: total feed intake (DM) per tank / biomass increase of non-mature fish.

All-fish: individual body weights of both mature and non-mature were included in the calculation; non-mature fish: individual body weights of non-mature fish only were included in the calculation.

SGR, specific growth rate; SFR, specific feeding rate; TGC, thermal growth coefficient; FCR, feed conversion ratio.

Effect of drying time was analyzed by regression on dry diets D96, D94, D92 and D91 and effect of soaking was tested by ANOVA on diet D92 and S70.

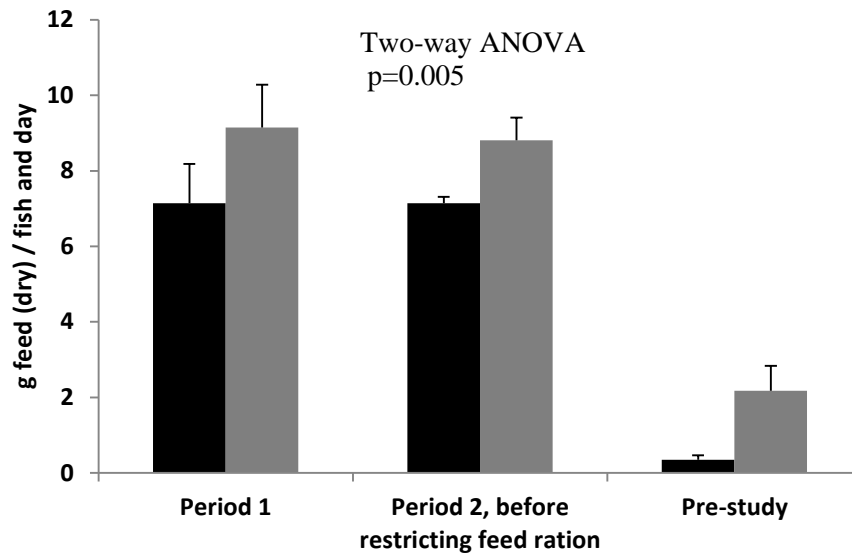


Figure 4 Average feed intake (g DM per fish per day) of Atlantic salmon fed a soaked and corresponding unsoaked diet for three situations: 1) period 1 of the main trial (ad libitum feeding) 2) first 12 days of period 2 before feed ration was restricted 3) the pre-study. Grey bars are soaked feed and black bars the corresponding dry feed. Data is given as mean \pm SEM.

3.5 Relationship between physical feed quality and feed intake

Water stability at 240 min had a significant positive linear effect on total feed intake and SGR ($R^2=0.82$ and $R^2=0.90$, respectively) (Fig. 5). Hardness, DM, DORIS durability, bulk density, water stability after 60 min and water stability after 120 min did not have significant linear effects on feed intake and SGR (not shown).

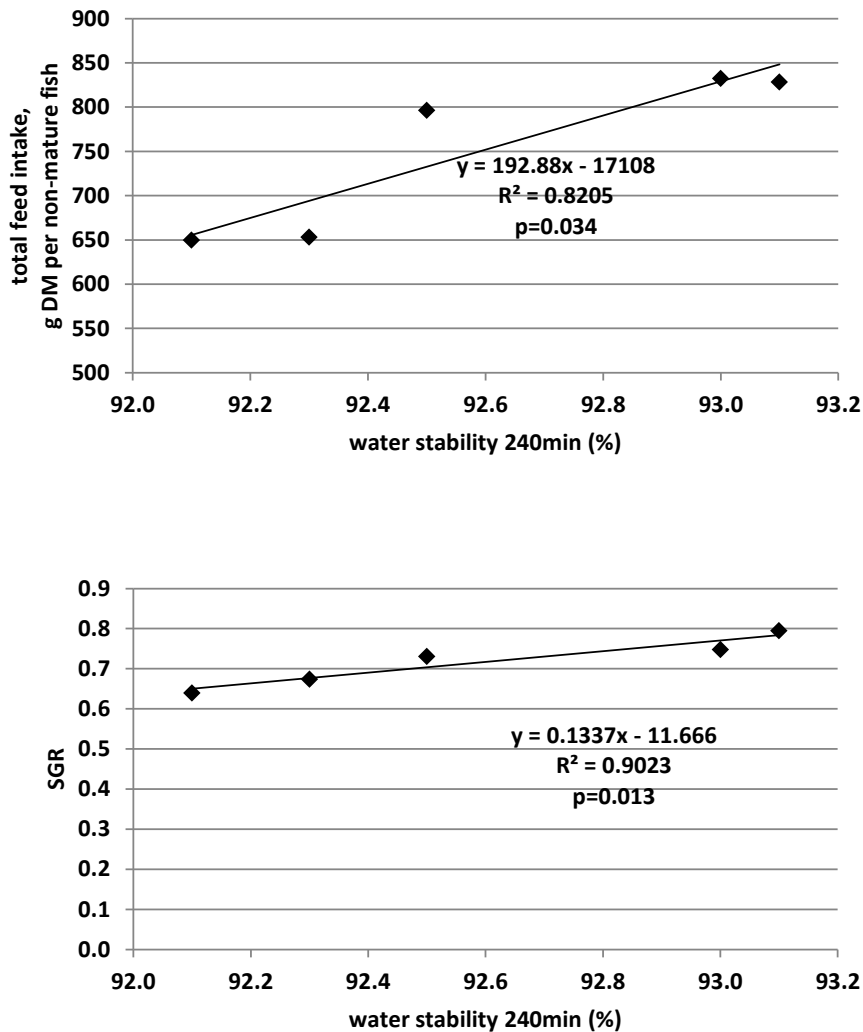


Figure 5 Linear effect of water stability at 240 min (%) of experimental diets used in the main trial on total feed intake (g DM per non-mature fish, upper panel) and specific growth rate (SGR, lower panel) at ad libitum feeding (period 1 of the main trial).

3.6 Digestibility

Apparent digestibility of fish fed ad libitum or restricted was not affected by drying time (Table 6). Starch digestibility was slightly lower in the soaked diet compared to the corresponding dry diet when fish was fed restricted and ad libitum. Moreover, soaking influenced Na digestibility in fish fed restricted and ad libitum, while Fe digestibility was affected only when fish was fed restricted. The soaked diet gave less accumulation of minerals in feces compared to the dry diet. Differences in Na digestibility between the soaked and corresponding dry diets were 169.3 % and 107.8 % for fish fed ad libitum and restricted, respectively. Most nutrients showed higher AD when the fish was fed restricted compared to ad libitum. The average ADs of all five diets in fish fed ad libitum and restricted respectively, were 85.2 % and 85.8 % for nitrogen, 89.1 % and 90.1 % for sum of amino acids, 70.5 % and 72.5 % for starch, 29.7 % and 34.9 % for phosphorous and 60.6% and 66.9 % for cysteine.

Table 6 Apparent nutrient digestibility coefficients (AD, %) in Atlantic salmon fed diets of different physical feed quality *ad libitum* (period 1 of the main trial) and restricted at 0.4 % of body weight (period 2). Differences were produced by different drying times (D96, D94, D92, D91) or by soaking in sea water for two hours (S70, S73). Data is given as mean \pm SEM.

	Period 1					Period 2					Period
	D96	D94	<u>D92</u>	D91	<u>S70</u>	D96	D94	<u>D92</u>	D91	<u>S70</u>	
Crude lipid	93.5 \pm 0.7	95.8 \pm 0.5	95.2 \pm 0.7	95.4 \pm 0.0	95.3 \pm 0.4	93.8 \pm 0.2	95.7 \pm 0.3	94.6 \pm 0.8	94.8 \pm 0.5	94.0 \pm 0.9	NS
Nitrogen	84.1 \pm 0.9	86.0 \pm 0.7	85.3 \pm 0.2	84.5 \pm 0.5	85.9 \pm 0.6	85.1 \pm 0.1	86.9 \pm 0.3	85.7 \pm 0.6	84.9 \pm 0.2	86.5 \pm 0.6	*
sum of amino acids	88.5 \pm 0.6	89.6 \pm 0.5	89.4 \pm 0.2	88.8 \pm 0.3	89.2 \pm 0.4	89.9 \pm 0.1	90.6 \pm 0.1	90.2 \pm 0.6	89.8 \pm 0.3	90.2 \pm 0.4	*
DM	62.5 \pm 1.5	66.1 \pm 1.0	64.8 \pm 0.8	63.8 \pm 0.8	65.6 \pm 0.5	63.3 \pm 0.5	66.4 \pm 0.7	64.1 \pm 0.2	63.3 \pm 0.4	64.7 \pm 1.1	NS
Starch	70.8 \pm 0.8	71.9 \pm 0.8	73.4 \pm 1.5 ^a	68.9 \pm 0.8	67.6 \pm 1.1 ^b	73.1 \pm 1.0	74.0 \pm 0.5	74.2 \pm 0.8 ^a	70.8 \pm 0.3	70.2 \pm 0.4 ^b	*
Energy	78.3 \pm 1.1	80.7 \pm 0.6	79.6 \pm 0.7	79.2 \pm 0.4	80.5 \pm 0.6	79.2 \pm 0.2	81.2 \pm 0.4	80.0 \pm 0.6	79.2 \pm 0.0	80.3 \pm 0.7	NS
<i>Minerals:</i>											
Phosphorous	25.9 \pm 3.1	33.8 \pm 2.6	30.0 \pm 1.6	31.7 \pm 3.3	27.1 \pm 0.9	32.3 \pm 3.5	37.9 \pm 2.3	36.5 \pm 2.1	35.2 \pm 2.4	32.6 \pm 3.1	*
Magnesium	-364.5 \pm 25.9	-312.4 \pm 38.2	-303.0 \pm 65.5	-318.1 \pm 12.6	-237.4 \pm 34.0	-411.6 \pm 14.8	-386.6 \pm 27.6	-436.3 \pm 33.1	-390.9 \pm 26.0	-326.0 \pm 48.1	*
Sodium	-197.6 \pm 25.8	-202.6 \pm 22.0	-186.9 \pm 20.7 ^b	-213.0 \pm 3.4	-46.1 \pm 11.7 ^a	-127.6 \pm 12.1	-130.0 \pm 9.9	-120.2 \pm 14.3 ^b	-135.2 \pm 10.8	-26.0 \pm 11.3 ^a	*
Iron	-15.3 \pm 4.2	6.3 \pm 5.1	8.9 \pm 8.8	-9.3 \pm 3.9	23.7 \pm 7.1	-6.0 \pm 12.0	-2.1 \pm 1.4	-6.5 \pm 4.2 ^b	-12.3 \pm 2.0	14.8 \pm 2.6 ^a	NS
Zinc	12.2 \pm 4.1	19.1 \pm 7.3	21.7 \pm 10.3	13.4 \pm 3.5	16.3 \pm 6.3	10.7 \pm 2.7	12.6 \pm 3.8	9.6 \pm 1.4	12.8 \pm 2.5	12.2 \pm 2.3	NS
<i>Dispensible amino acids:</i>											
Alanine	88.7 \pm 0.4	90.0 \pm 0.3	89.9 \pm 0.2	89.2 \pm 0.3	89.2 \pm 0.3	90.1 \pm 0.0	90.8 \pm 0.2	90.5 \pm 0.6	90.1 \pm 0.1	90.2 \pm 0.3	*
Aspartic acid	81.3 \pm 1.1	83.5 \pm 0.8	82.7 \pm 0.3	81.9 \pm 0.6	82.9 \pm 0.8	83.3 \pm 0.1	84.5 \pm 0.2	83.5 \pm 1.1	83.1 \pm 0.6	84.1 \pm 0.9	*
Cysteine	58.9 \pm 2.9	62.3 \pm 3.3	60.9 \pm 0.8	60.6 \pm 1.2	60.1 \pm 2.2	67.4 \pm 0.8	67.9 \pm 0.5	65.1 \pm 3.5	67.0 \pm 1.7	66.8 \pm 1.2	*
Glutamic Acid	91.9 \pm 0.4	92.7 \pm 0.5	92.5 \pm 0.1	92.2 \pm 0.2	92.4 \pm 0.3	93.3 \pm 0.1	93.8 \pm 0.1	93.6 \pm 0.5	93.2 \pm 0.3	93.5 \pm 0.3	*
Glycine	80.2 \pm 1.2	82.6 \pm 0.8	81.7 \pm 0.2	81.1 \pm 0.5	81.3 \pm 0.8	82.6 \pm 0.3	83.8 \pm 0.2	83.1 \pm 1.2	82.8 \pm 0.6	82.9 \pm 0.7	*
Proline	87.5 \pm 0.9	89.1 \pm 0.7	88.6 \pm 0.2	87.8 \pm 0.5	88.7 \pm 0.5	89.4 \pm 0.2	89.7 \pm 0.4	89.8 \pm 0.6	88.9 \pm 0.3	89.4 \pm 0.3	*
Serine	86.6 \pm 0.6	87.9 \pm 0.5	87.9 \pm 0.2	87.2 \pm 0.3	87.4 \pm 0.5	88.4 \pm 0.1	89.2 \pm 0.2	88.9 \pm 0.8	88.2 \pm 0.2	88.7 \pm 0.4	*
Taurin	-97.2 \pm 7.9	-127.2 \pm 10.9	-49.1 \pm 19.7	-79.1 \pm 18.7	-83.4 \pm 16.0	-18.8 \pm 6.1	-7.3 \pm 3.9	19.4 \pm 2.5	-25.4 \pm 4.1	-20.5 \pm 20.7	*
Tyrosine	90.3 \pm 0.3	91.1 \pm 0.2	91.2 \pm 0.2	90.5 \pm 0.2	91.6 \pm 0.2	91.5 \pm 0.2	92.3 \pm 0.2	92.1 \pm 0.4	91.3 \pm 0.2	92.4 \pm 0.2	*
<i>Indispensible amino acids:</i>											
Arginine	93.9 \pm 0.2	94.5 \pm 0.1	94.4 \pm 0.1	94.1 \pm 0.1	94.3 \pm 0.1	94.3 \pm 0.0	94.7 \pm 0.2	94.5 \pm 0.2	94.2 \pm 0.1	94.4 \pm 0.2	*
Histidine	88.5 \pm 0.6	89.3 \pm 0.4	89.3 \pm 0.2	88.3 \pm 0.4	88.7 \pm 0.5	89.8 \pm 0.1	90.5 \pm 0.1	90.0 \pm 0.7	89.5 \pm 0.3	89.8 \pm 0.5	*
Isoleucine	89.5 \pm 0.4	90.5 \pm 0.4	90.5 \pm 0.2	90.1 \pm 0.2	90.3 \pm 0.3	90.8 \pm 0.0	91.5 \pm 0.2	91.2 \pm 0.5	90.8 \pm 0.2	91.3 \pm 0.3	*
Leucine	90.4 \pm 0.3	91.3 \pm 0.3	91.3 \pm 0.2	90.8 \pm 0.2	90.9 \pm 0.2	91.3 \pm 0.1	92.1 \pm 0.1	91.8 \pm 0.4	91.3 \pm 0.1	91.7 \pm 0.2	*
Lysine	91.7 \pm 0.4	92.4 \pm 0.5	92.4 \pm 0.1	92.0 \pm 0.3	92.2 \pm 0.3	92.1 \pm 0.0	92.9 \pm 0.2	92.4 \pm 0.3	92.2 \pm 0.2	92.4 \pm 0.3	NS
Methionine	91.8 \pm 0.3	92.7 \pm 0.2	92.4 \pm 0.2	91.7 \pm 0.3	91.6 \pm 0.4	92.7 \pm 0.1	93.1 \pm 0.1	92.8 \pm 0.5	92.0 \pm 0.1	92.3 \pm 0.4	*
Phenylalanine	90.3 \pm 0.3	91.0 \pm 0.3	91.1 \pm 0.3	90.4 \pm 0.2	90.5 \pm 0.3	91.0 \pm 0.0	91.7 \pm 0.1	91.5 \pm 0.4	91.0 \pm 0.1	91.0 \pm 0.2	*
Threonine	84.2 \pm 0.9	85.7 \pm 0.7	85.4 \pm 0.2	84.6 \pm 0.4	85.1 \pm 0.5	86.2 \pm 0.2	87.2 \pm 0.3	86.4 \pm 0.8	85.5 \pm 0.3	86.5 \pm 0.4	*
Tryptophan	86.4 \pm 0.4	86.4 \pm 0.6	87.7 \pm 0.5	87.4 \pm 0.7	87.7 \pm 0.5	87.4 \pm 0.6	88.3 \pm 0.5	88.9 \pm 0.8	87.8 \pm 0.4	88.2 \pm 0.3	*
Valine	88.8 \pm 0.4	89.9 \pm 0.4	89.8 \pm 0.2	89.3 \pm 0.2	89.5 \pm 0.3	90.4 \pm 0.0	91.1 \pm 0.2	90.7 \pm 0.6	90.3 \pm 0.2	90.8 \pm 0.3	*

Regression analysis gave no significant effects on digestibility for the dry diets within each period.

^{ab} Different letters indicate that means of D92 and S70 in the same row for each period are significantly different ($P < 0.05$), testes with ANOVA for feed D92 and S70.

* indicates significant effect of period ($p < 0.05$) tested by repeated ANOVA; NS, not significant.

3.7 Gastrointestinal content and tissue

Neither amount and pellet integrity of gastrointestinal content, nor intestinal tissue were affected by drying time or by soaking of the feeds. At sampling (22-27 hours after feeding), the stomach was empty in most fish.

4 Discussion

All experimental feeds were formulated identically, and the differences in feed quality were achieved by either adjusting drying time after the extrusion process, or by soaking one of the feeds in water before feeding or chemical and physical analyses. Processing involving heat may result in undesirable chemical reactions reducing bioavailability of heat sensitive nutrients (Camire et al., 1990, Opstvedt et al., 1984). High moisture content (25-30 %) is however, protecting protein and amino acids during extrusion processing ensuring high digestibility of these nutrients (Sørensen et al., 2002). Heat processing at low moisture content may result in degradation or formation of undesirable cross-linkages in amino acids. The amino acids arginine, cysteine, lysine, serine and threonine are most susceptible to degradation (Papadopoulos, 1989, Pickford, 1992). Cysteine may form disulfide-bonds (Opstvedt et al., 1984), and lysine is susceptible to form Maillard reactions at high temperature in combination with low moisture content (Singh et al., 2007). Such reactions may reduce the availability of amino acids (Ljøkjel et al., 2000). Moisture content is reduced in a dryer, from 30 % after extrusion to below 8 %, to increase the shelf life during storage (Sørensen, 2003). Excessive drying can be a significant factor for formation of disulfid bridges and heat induced oxidation of cysteine and methionine (Opstvedt et al., 1984). Opstvedt et al. (1984) reported that fish meals dried at temperatures ranging from 40 to 115 °C for 40 min, gave decreased protein and amino acid digestibilities at temperatures above 95 °C. In the present trial, drying temperatures measured at the top of the dryer did not exceed 118 °C, which is lower than temperatures during extrusion, however, the protecting effect of moisture disappears during drying. Nutrient content of the experimental diets was not affected by drying time, except for taurine, which was marginally reduced with drying time. Loss of taurine during processing has been described previously and was suggested to be caused by either leaching or Maillard reaction upon heating (Larsen et al., 2007, Spitze et al., 2003). Digestibility of nitrogen and amino acids was not affected by drying time, indicating that there was no severe damages because of the treatments. Digestibility of cysteine was in general low for all diets, and may have resulted in low availability for the fish. Cysteine is susceptible to form disulphide bonds at treatments involving high temperature and low moisture content (Opstvedt et al., 1984). Since no differences were observed in cysteine digestibility among treatments in the present experiment, the low digestibility was probably not caused by the drying of the feeds. Another explanation suggested is that the heat damage already had occurred during processing of the ingredients before feed production. Ljøkjel et al. (2000) showed that heat treatment at 130 °C for 30 min of soybean meal significantly reduced the cysteine concentration, probably due to Maillard reaction, and caused a reduced cysteine digestibility in soybean meal and fish meal based diets in mink. It was further suggested that reduced cysteine digestibility was due to formation of disulfid bridges. However, analytical methods used to analyze cysteine in the study by Ljøkjel et al. (2000) and the present study, do not discriminate between cysteine and cysteine bound in disulphide bridges (cystine). Cysteine levels analyzed in the diets were together with methionine according to the requirement of sulfur-containing amino acids of salmon (Rollin et al., 2003), however, more cysteine was excreted in the feces.

When soaking feed in sea water, ions from the water will migrate into the pellets, and some nutrients may leach from the pellets. Thus, a change in chemical composition is expected. When soaking diet D92 in sea water, the concentration of ions from the sea water (Mg, Na,

Fe) increased, while the concentration of some amino acids (Ala, Gly, Hyl, Pro, Tau, His, Met, Phe) was reduced. These results strongly suggest that amino acid concentration should be monitored if extruded feed is soaked in water prior to feeding.

The fish appeared to be at good health, and there was no mortality in the trial, except from one individual fish, that jumped out of the tank. Sexual maturation among male fish appeared during the trial, resulting in anorexia and negative weight development for these fish. Therefore, mature fish were excluded from calculations. Calculations based on only non mature fish followed the same pattern compared to use of all fish. Consequently, the interpretation of results was not affected by the mature males.

4.1 Feed intake, growth and feed utilisation

The diets varied in DM, bulk density, hardness and DORIS durability and differences were achieved by varying drying time after extrusion in feed production. Among pellet qualities used in this trial, no significant effects were noted on feed intake, digestibility and growth. However, large numerical differences were noted between the best and lowest performing groups. Salmon fed D91, with the highest durability, hardness and bulk density, had 28% greater feed intake and 36% higher weight gain, compared to those fed D92. Soaking the pellets in water before feeding significantly increased feed intake but did not affect hardness and water stability of the feeds. This is in contrast to the findings of Aas et al. (2011b) who reported that feed intake in rainbow trout was affected by physical feed quality. In that study, feed intake was approximately 20 % higher in trout fed a diet with low water stability (27.9 % retained DM) than in trout fed a diet with high water stability (80.6 % retained DM). In the present study, all feeds were more stable (92.6 % on average) and no differences were noted in water stability among diets. Also, the diets used in the present trial were considerably harder, ranging from 33.2 to 54.3 N, compared to those used by Aas et al. (2011b), ranging from 20.1 to 27.3 N. Contradictive findings were previously reported about the relationship between hardness and feed intake (reviewed by Sørensen, 2012). In line with Glencross et al. (2011b) and Bæverfjord et al. (2006), the present findings indicate no evident relationship between feed intake and hardness, as well as a positive relationship between feed intake and long term water stability. Contradictive findings among experiments about the interaction of physical quality and feed intake may be related to species differences as well as feed intake levels, and physical differences not covered by the methods used.

Soaking had a positive effect on feed intake, particularly in the adaption periods with low or increasing feed intake. The reason for the low feed intake during the pre-study is not known. The low feed intake during the adaption period before restricted feeding is explained by handling stress during sampling. The positive effect of soaked pellets on feed intake may be because of stimulated appetite due to dispersion of feed odor in the tanks. In addition to olfactory mechanisms, the increased water content of soaked pellets may positively affect pellet disintegration and gastrointestinal retention time. The digestion of pellets start with absorption of water. Kristiansen & Rankin (2001) showed that extruded pellets in juvenile rainbow trout started to disintegrate at a moisture content of 65 %. Thus, soaking of pellets prior to feeding may reduce the gastric moisturing time resulting in shorter retention time in the fish stomach. However, water stability test, which is suggested to mimic intestinal disintegration of pellets (reviewed by Sørensen, 2012), was not different for the soaked and

corresponding dry diet. Furthermore, visual analysis of pellet integrity throughout the gut did not reveal any differences in intestinal pellet disintegration for the soaked and corresponding dry diet. The present data showed that soaking of feed pellets affected feed intake, in particular in periods of low feed intake, indicating that moisturizing of extruded feed may be a tool to improve feed intake and growth, especially in periods when feed intake is relatively low.

The lower starch digestibility in the feeding period with ad libitum feeding compared to the feeding period with fixed ration may be due to a faster gastrointestinal evacuation rate. This may also explain the difference in starch digestibility for the unsoaked and the soaked diets. Faster gastrointestinal evacuation rate has previously resulted in reduced nutrient digestibility (Adamidou et al., 2009, Venou et al., 2009). Differences in digestibility between soaked and unsoaked diet were only observed for starch, but not for other nutrients most likely because Atlantic salmon has low capacity to digest starch (Krogdahl et al., 2005).

Digestibility of Na was negative (accumulation in feces) for both periods (restricted and ad libitum feeding) because the fish was kept in sea water. Fish fed the soaked diet had less accumulation of Na. This may be related to the higher level of Na in the soaked diet originating from seawater, compared to the corresponding dry diet. Different drinking rate of sea water between fish fed soaked and dry diet may influence accumulation of Na and other minerals in feces (Shehadeh & Gordon, 1969). Ruohonen et al. (1997) suggested that feeding dry pellets to rainbow trout increased the demand for water that was met by drinking. Fish fed the soaked diet may thus have a lower need to drink seawater than fish fed the extruded diet. A calculation taking into account the different Na-digestibility values of the dry and soaked diets and different dietary Na concentration, showed that the total amount of Na accumulating in the feces was similar between the two dietary treatments at ad libitum and restricted feeding. In contrast to Ruohonen et al. (1997) the present results suggest that drinking rate was not affected by the DM of the pellets. Thus, the differences in Na-digestibilities between the soaked and dry diet in the present experiment seems to be a result of soaking in seawater.

The digestibility of nitrogen, starch, most amino acids, P and Ca was higher in fish fed restricted compared to ad libitum, and was not affected by drying time of the feeds. These results are in line with Aas et al. (2011b), who reported that higher feed intake gave lower apparent nutrient digestibility. In the study of Aas et al. (2011b), the effect of physical feed quality on nutrient digestibility was confounded with effect of feed intake. The present data, however, showed that nutrient digestibility increased at low feed intake, when retention time in the gastrointestinal was high, and was not directly affected by drying time or differences in physical feed quality.

Generally, differences in average AD between ad libitum and restricted feeding were larger for nutrients that were digested less efficiently, such as cysteine and phosphorous. In comparison, nutrients with high ADs were not affected by feeding regime, such as lysine, lipid and energy. The results showed that in situations with high feed intake the ratio of digested nutrients can be reduced. This may affect the diet's ability to fulfill requirements of essential nutrients, in particular the nutrients that are not easily available, such as cysteine and phosphorous.

4.2 Measurement of physical feed quality

In the present experiment, significant effects on bulk density, DORIS durability, hardness and short term water stability by drying time were found, however, these measurements did not correlate with feed intake, gastrointestinal pellet integrity or digestibility. Hardness and long term water stability measurements did not correlate with the other methods of physical feed quality indicating that these methods may describe pellet characteristics that are not captured by DM, bulk density, DORIS durability and short term water stability analyses. Non-significant, but numerical differences, were observed in feed intake and growth among treatment groups. However, the variation in physical quality induced by manipulating drying time may not have been large enough to interfere with feed intake. Hardness was significantly affected by drying. Large variation within the feeds was found for the hardness measurements for diet D96 and D94. In measurement of particle size distribution, large variation was also noted for D96 and was due to one sample with very large particles. However, the variation among the feeds were modest, ranging between 33.2 N to 52.3 N. Besides, the hardness values of the feeds used in the present experiment were high compared to other experiments (Aas et al., 2011b, Morken et al., 2011, Morken et al., 2012). Hardness of pellets is positively associated with pellet diameter (Abdollahi et al., 2012, Kaliyan & Vance Morey, 2009). The higher hardness of pellets used in the present experiment may thus be explained with the larger diameter of the pellets compared to other experiments (Aas et al., 2011b, Morken et al., 2011, Morken et al., 2012). The high hardness of the feeds used in the present experiment may have interfered with feed intake, restricting the realization of growth potential. Feed intake and growth was positively correlated with long term water stability, though it was not affected by drying time and no significant differences in feed and growth were noted among the feeds. Long term water stability is suggested to mimic disintegration of pellets in the gastrointestinal tract and influence gastric evacuation rate (Sørensen, 2012). This is in line with finding of Aas et al. (2011b) suggesting that pellets with high water stability and hardness slowed down gastric evacuation rate. Visual inspection of the feed indicates that the soaked diet differed from the dry diet, but no significant differences were observed in long term water stability and hardness. There exist no methods that objectively describe water absorption and distribution in feed pellets, and disintegration of pellets in water. These pellet characteristics may be central because dietary moisture may improve feed intake and growth and be related to disintegration of feed pellets. The decreasing durability and increasing dust formation at DM above 92% indicate that low water content could potentially create pellet breakage leading to feed spill (Aas et al., 2011a). Such feed spill caused by small particles and fines may reduce feed intake and feed utilization at commercial fish farms. The controlled feeding routines used in the present experiment were not expected to create fines compared to large scale facilities. However, available methods used to analyze physical feed quality did not correlate with pellet degradation in pneumatic feeding system (Aas et al., 2011a). To reduce feed spill and increase feed intake and feed utilization it is important to produce pellets with a compromised physical quality to balance losses related to feed transport and conveying against potential negative effects on fish performance. Overall, the present experiment showed that most existing methods used to analyze physical feed quality did not correspond well with nutritional responses. Only long term water stability was associated with feed intake. Nutrient digestibility depended rather on feed intake than on pellet quality. Variation in physical feed quality of commercial feeds suggest that it is important to understand the impact of physical quality on feed intake and

growth, in order to realize the full growth potential and predict production of Atlantic salmon more precisely.

4.3 Physical feed quality and water quality

The driest feed (D96) released about 3.4 times more particles than the dry feed with highest water content (D91) after 15 min. in shaking water bath. These findings correspond well with the results of the water stability test. Moreover, the particle size distribution was different among the experimental diets when pellets were shaken intensely for 120 min. The present results showed that physical feed quality can affect the prevalence of small particles in water used for fish culture. Removing fine particles are challenging and require advanced solid separation techniques (Chen et al., 1993). This may be of particular importance of management of recirculating systems in aquaculture.

5 Conclusion

Overall, no significant effects of drying time of feed were observed on feed intake in fish. Soaking the feed before feeding had a positive effect on feed intake. Restricted feeding compared to ad libitum feeding gave higher nutrient digestibility. Digestibility was not affected by physical quality produced by varying drying time among diets, however, soaking resulted in slightly reduced digestibility of starch. Most methods used to analyze physical feed quality did not correlate to feed intake and growth, only long term water stability was associated with feed intake but has to be further investigated. Considering the variation in physical feed quality in commercial feeds, it is important to understand potential impacts of physical feed quality on feed intake, growth and feed utilization in order to improve production planning and utilization of the full growth potential of Atlantic salmon.

6 Acknowledgments

This work was supported by the Centre for Research-based Innovation in Aquaculture Technology (CREATE), which is supported by the Norwegian Research Council, AkvaGroup AS, Egersund Net AS, PolarCirkel AS, Erling Haug AS, Biomar AS, Lerøy AS, Marine Harvest AS and Salmar AS. The authors wish to thank the technical staff at Nofima's research facilities at Sunndalsøra for taking care of the fish and the staff in the Nofima's laboratory in Sunndalsøra for carrying out the chemical analyses.

7 References

- Aas, T.S., Oehme, M., Sørensen, M., He, G., Lygren, I. & Åsgård, T. (2011a) Analysis of pellet degradation of extruded high energy fish feeds with different physical qualities in a pneumatic feeding system. *Aquacultural Engineering*, **44**, 25-34.
- Aas, T.S., Terjesen, B.F., Sigholt, T., Hillestad, M., Holm, J., Refstie, S., Bæverfjord, G., Rørvik, K.-A., Sørensen, M., Oehme, M. & Åsgård, T. (2011b) Nutritional value of feeds with different physical qualities fed to rainbow trout (*Oncorhynchus mykiss*) at stable or variable environmental conditions. *Aquaculture Nutrition*, **17**, 657-670.
- Abdollahi, M.R., Ravindran, V., Wester, T.J., Ravindran, G. & Thomas, D.V. (2012) The effect of manipulation of pellet size (diameter and length) on pellet quality and performance, apparent metabolisable energy and ileal nutrient digestibility in broilers fed maize-based diets. *Animal Production Science*, doi.org/10.1071/AN12166.
- Adamidou, S., Nengas, I., Alexis, M., Foundoulaki, E., Nikolopoulou, D., Campbell, P., Karacostas, I., Rigos, G., Bell, G.J. & Jauncey, K. (2009) Apparent nutrient digestibility and gastrointestinal evacuation time in European seabass (*Dicentrarchus labrax*) fed diets containing different levels of legumes. *Aquaculture*, **289**, 106-112.
- APHA (2005) 2540 D. Total Suspended Solids Dried at 103–105°C In *Standard Methods for the Examination of Water & Wastewater*, Vol. 21. American Public Health Association.
- Austreng, E. (1978) Digestibility determination in fish using chromic oxide marking and analysis of contents from different segments of the gastrointestinal tract. *Aquaculture*, **13**, 265-272.
- Bergheim, A. & Åsgård, T. (1996) Waste production from aquaculture In *Aquaculture and Water Resource Management* (Baird, D.J., et al. eds.), pp. 50-80. Blackwell Sci., London.
- Bæverfjord, G., Refstie, S., Krogedal, P. & Åsgård, T. (2006) Low feed pellet water stability and fluctuating water salinity cause separation and accumulation of dietary oil in the stomach of rainbow trout (*Oncorhynchus mykiss*). *Aquaculture*, **261**, 1335-1345.
- Camire, M.E., Camire, A. & Krumhar, K. (1990) Chemical and nutritional changes in foods during extrusion. *Critical Reviews in Food Science and Nutrition*, **29**, 35-57.
- Chen, S., Timmons, M.B., Aneshansley, D.J. & Bisogni Jr, J.J. (1993) Suspended solids characteristics from recirculating aquacultural systems and design implications. *Aquaculture*, **112**, 143-155.
- Cripps, S.J. & Bergheim, A. (2000) Solids management and removal for intensive land-based aquaculture production systems. *Aquacultural Engineering*, **22**, 33-56.
- Davis, M. (2002) *The Biochrom Handbook of Amino Acids*, Biochrom, Cambridge.

- Einen, O., Holmefjord, I., Åsgård, T. & Talbot, C. (1995) Auditing nutrient discharges from fish farms: theoretical and practical considerations. *Aquaculture Research*, **26**, 701-713.
- Einen, O., Mørkøre, T., Rørå, A.M.B. & Thomassen, M.S. (1999) Feed ration prior to slaughter--a potential tool for managing product quality of Atlantic salmon (*Salmo salar*). *Aquaculture*, **178**, 149-169.
- Gilpin, A.S., Herrman, T.J., Behnke, K.C. & Fairchild, F.J. (2002) Feed moisture, retention time, and steam as quality and energy utilization determinants in the pelleting process. *Applied Engineering in Agriculture*, **18**, 331-338.
- Gjedrem, T., Robinson, N. & Rye, M. (2012) The importance of selective breeding in aquaculture to meet future demands for animal protein: A review. *Aquaculture*, **350–353**, 117-129.
- Glencross, B., Hawkins, W., Evans, D., Rutherford, N., McCafferty, P., Dods, K. & Hauler, R. (2011a) A comparison of the effect of diet extrusion or screw-press pelleting on the digestibility of grain protein products when fed to rainbow trout (*Oncorhynchus mykiss*). *Aquaculture*, **312**, 154-161.
- Glencross, B., Rutherford, N. & Jones, B. (2011b) Evaluating options for fishmeal replacement in diets for juvenile barramundi (*Lates calcarifer*). *Aquaculture Nutrition*, **17**, e722-e732.
- Helland, S.J., Grisdale-Helland, B. & Nerland, S. (1996) A simple method for the measurement of daily feed intake of groups of fish in tanks. *Aquaculture*, **139**, 157-163.
- Hugli, T.E. & Moore, S. (1972) Determination of the tryptophan content of proteins by ion exchange chromatography of alkaline hydrolysates. *The Journal of Biological Chemistry*, **247**, 2828-2834.
- Ishizuka, T., Sako, N., Murotani, T., Morimoto, A., Yamatodani, A. & Ohura, K. (2010) The effect of hardness of food on amygdalar histamine release in rats. *Brain Research*, **1313**, 97-102.
- Kaliyan, N. & Vance Morey, R. (2009) Factors affecting strength and durability of densified biomass products. *Biomass and Bioenergy*, **33**, 337-359.
- Kristiansen, H.R. & Rankin, J.C. (2001) Discrimination between endogenous and exogenous water sources in juvenile rainbow trout fed extruded dry feed. *Aquat. Living Resour.*, **14**, 359–366.
- Krogdahl, Å., Hemre, G.-I. & Mommsen, T.P. (2005) Carbohydrates in fish nutrition: digestion and absorption in postlarval stages. *Aquaculture Nutrition*, **11**, 103-122.

- Larsen, R., Stormo, S.K., Dragnes, B.T. & Elvevoll, E.O. (2007) Losses of taurine, creatine, glycine and alanine from cod (*Gadus morhua* L.) fillet during processing. *Journal of Food Composition and Analysis*, **20**, 396-402.
- Ljøkjel, K., Harstad, O.M. & Skrede, A. (2000) Effect of heat treatment of soybean meal and fish meal on amino acid digestibility in mink and dairy cows. *Animal Feed Science and Technology*, **84**, 83-95.
- Lundblad, K.K., Issa, S., Hancock, J.D., Behnke, K.C., McKinney, L.J., Alavi, S., Prestlokken, E., Fledderus, J. & Sorensen, M. (2011) Effects of steam conditioning at low and high temperature, expander conditioning and extruder processing prior to pelleting on growth performance and nutrient digestibility in nursery pigs and broiler chickens. *Animal Feed Science and Technology*, **169**, 208-217.
- Moritz, J.S., Beyer, R.S., Wilson, K.J., Cramer, K.R., Mckinney, L.J. & Fairchild, F.J. (2001) Effect of Moisture Addition at the Mixer to a Corn-Soybean-Based Diet on Broiler Performance. *The Journal of Applied Poultry Research*, **10**, 347-353.
- Morken, T., Kraugerud, O.F., Barrows, F.T., Sørensen, M., Storebakken, T. & Øverland, M. (2011) Sodium diformate and extrusion temperature affect nutrient digestibility and physical quality of diets with fish meal and barley protein concentrate for rainbow trout (*Oncorhynchus mykiss*). *Aquaculture*, **317**, 138-145.
- Morken, T., Kraugerud, O.F., Sørensen, M., Storebakken, T., Hillestad, M., Christiansen, R. & ØVerland, M. (2012) Effects of feed processing conditions and acid salts on nutrient digestibility and physical quality of soy-based diets for Atlantic salmon (*Salmo salar*). *Aquaculture Nutrition*, **18**, 21-34.
- Oehme, M., Aas, T.S., Sørensen, M., Lygren, I. & Åsgård, T. (2012) Feed pellet distribution in a sea cage using pneumatic feeding system with rotor spreader. *Aquacultural Engineering*, **51**, 44-52.
- Oppedal, F., Dempster, T. & Stien, L.H. (2011) Environmental drivers of Atlantic salmon behaviour in sea-cages: A review. *Aquaculture*, **311**, 1-18.
- Opstvedt, J., Miller, R., Hardy, R.W. & Spinelli, J. (1984) Heat-induced changes in sulfhydryl groups and disulfide bonds in fish protein and their effect on protein and amino acid digestibility in rainbow trout (*Salmo gairdneri*). *J. Agric. Food Chem*, **32**, 929-935.
- Papadopoulos, M.C. (1989) Effect of processing on high-protein feedstuffs: a review. *Biol. Wastes*, **29**, 123-138.
- Picard, M., Le Fur, C., Melcion, J.P. & Bouchot, C. (2000) Feed particles: what chickens see and touch! *Productions Animales*, **13**, 117-130.
- Pickford, J.R. (1992) Effects of processing on the stability of heat labile nutrients in animal feeds In *Recent Advances in Animal Nutrition* (Haresign, W. & Cole, D.J.A. eds.). Redwood Press, Melksham, UK.

- Rollin, X., Mambrini, M., Abboudi, T., Larondelle, Y. & Kaushik, S.J. (2003) The optimum dietary indispensable amino acid pattern for growing Atlantic salmon (*Salmo salar* L.) fry. *British Journal of Nutrition*, **90**, 865-876.
- Ruohonen, K., Grove, D.J. & McIlroy, J.T. (1997) The amount of food ingested in a single meal by rainbow trout offered chopped herring, dry and wet diets. *Journal of Fish Biology*, **51**, 93-105.
- Schellingerhout, A.B. (2002) Essential-fatty acid supply of weanling piglets. PhD Thesis. Department of Nutrition and Department of Laboratory Animal Science, Faculty of Veterinary Medicine, Utrecht University, Utrecht.
- Scott, T.A. (2002) Impact of wet feeding wheat-based diets with or without enzyme on broiler chick performance. *Canadian Journal of Animal Science*, **82**, 409-417.
- Shehadeh, Z.H. & Gordon, M.S. (1969) The role of the intestine in salinity adaptation of the rainbow trout, *Salmo gairdneri*. *Comparative Biochemistry and Physiology*, **30**, 397-418.
- Singh, S., Gamlath, S. & Wakeling, L. (2007) Nutritional aspects of food extrusion: a review. *International Journal of Food Science and Technology*, **42**, 916-929.
- Sola-Oriol, D., Roura, E. & Torrallardona, D. (2009) Feed preference in pigs: Relationship with feed particle size and texture. *Journal of Animal Science*, **87**, 571-582.
- Spitze, A.R., Wong, D.L., Rogers, Q.R. & Fascetti, A.J. (2003) Taurine concentrations in animal feed ingredients; cooking influences taurine content. *Journal of Animal Physiology and Animal Nutrition*, **87**, 251-262.
- Summerfelt, S. & Vinci, B. (2007) Solids Capture In *Recirculating Aquaculture* (Timmons, M.B. & Ebeling, J.M. eds.). Cayuga Aqua Ventures, Ithaca.
- Sveier, H., Wathne, E. & Lied, E. (1999) Growth, feed and nutrient utilisation and gastrointestinal evacuation time in Atlantic salmon (*Salmo salar* L.): the effect of dietary fish meal particle size and protein concentration. *Aquaculture*, **180**, 265-282.
- Sørensen, M. (2003) Nutritional and physical quality of fish feeds extruded at various temperatures. PhD Thesis. Department of Animal Science Aricultural University of Norway, Ås, Norway.
- Sørensen, M. (2012) A review of the effects of ingredient composition and processing conditions on the physical qualities of extruded high-energy fish feed as measured by prevailing methods. *Aquaculture Nutrition*, **18**, 233-248.
- Sørensen, M., Ljøkjel, K., Storebakken, T., Shearer, K.D. & Skrede, A. (2002) Apparent digestibility of protein, amino acids and energy in rainbow trout (*Oncorhynchus mykiss*) fed a fish meal based diet extruded at different temperatures. *Aquaculture*, **211**, 215-225.

Venou, B., Alexis, M.N., Fountoulaki, E. & Haralabous, J. (2009) Performance factors, body composition and digestion characteristics of gilthead sea bream (*Sparus aurata*) fed pelleted or extruded diets. *Aquaculture Nutrition*, **15**, 390-401.

